

## 2045 OUTLOOK

Wilson County is home to a number of natural areas that will be vulnerable to future development if population growth continues to sprawl across the landscape as it has in recent decades. These areas include steep slopes, flood plains, wetlands, rivers and streams, and other habitats that support the county's biodiversity.

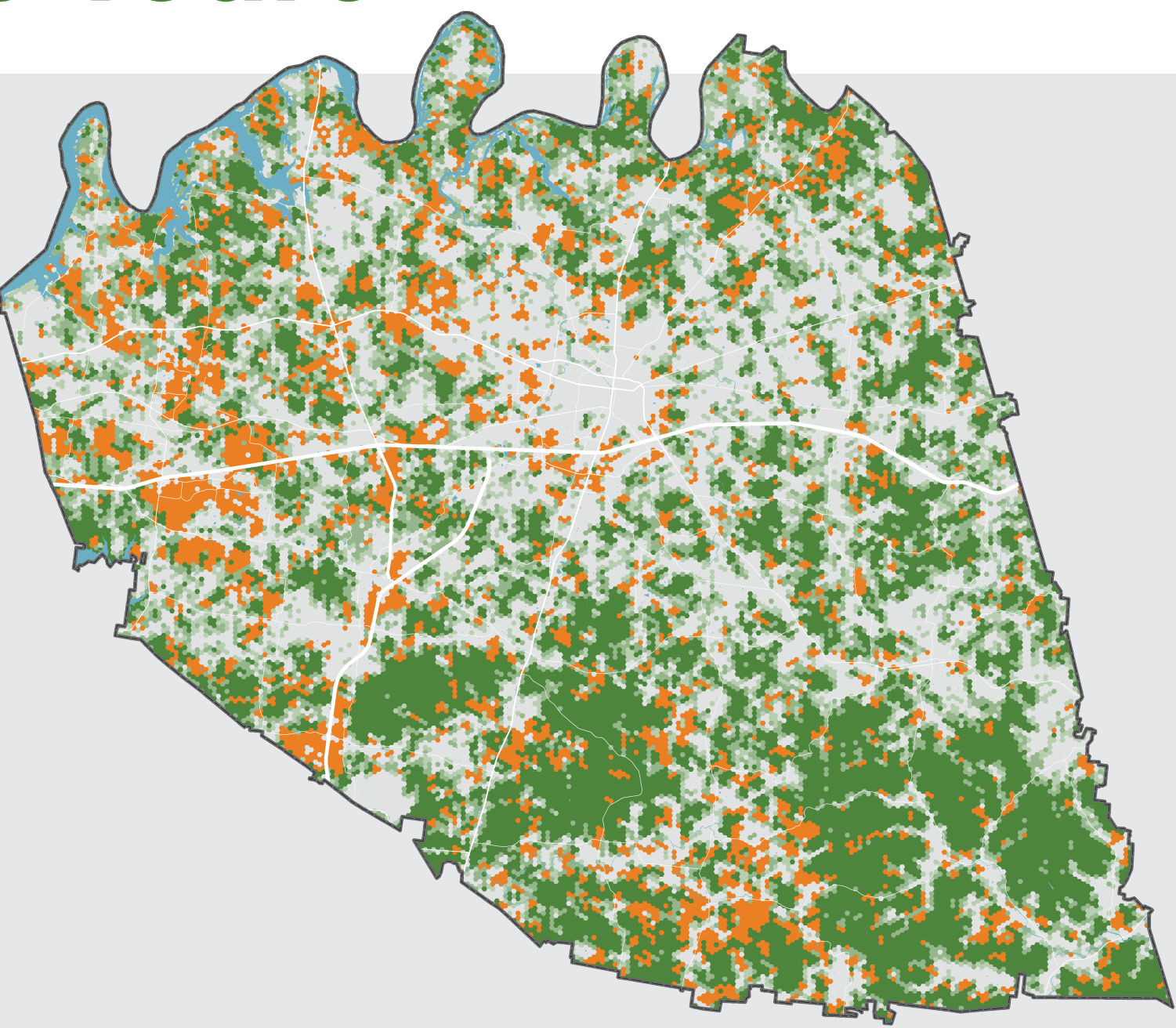
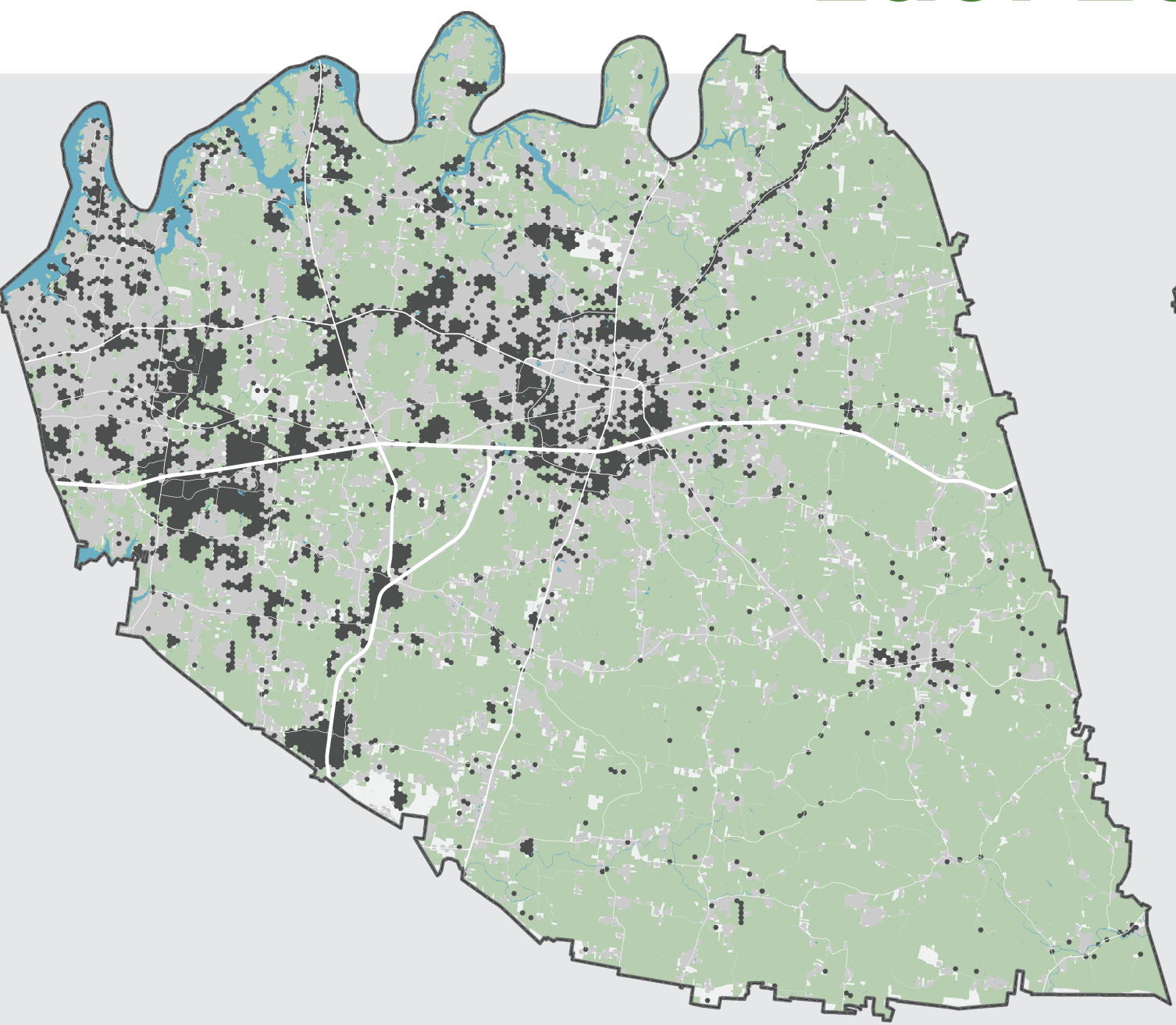
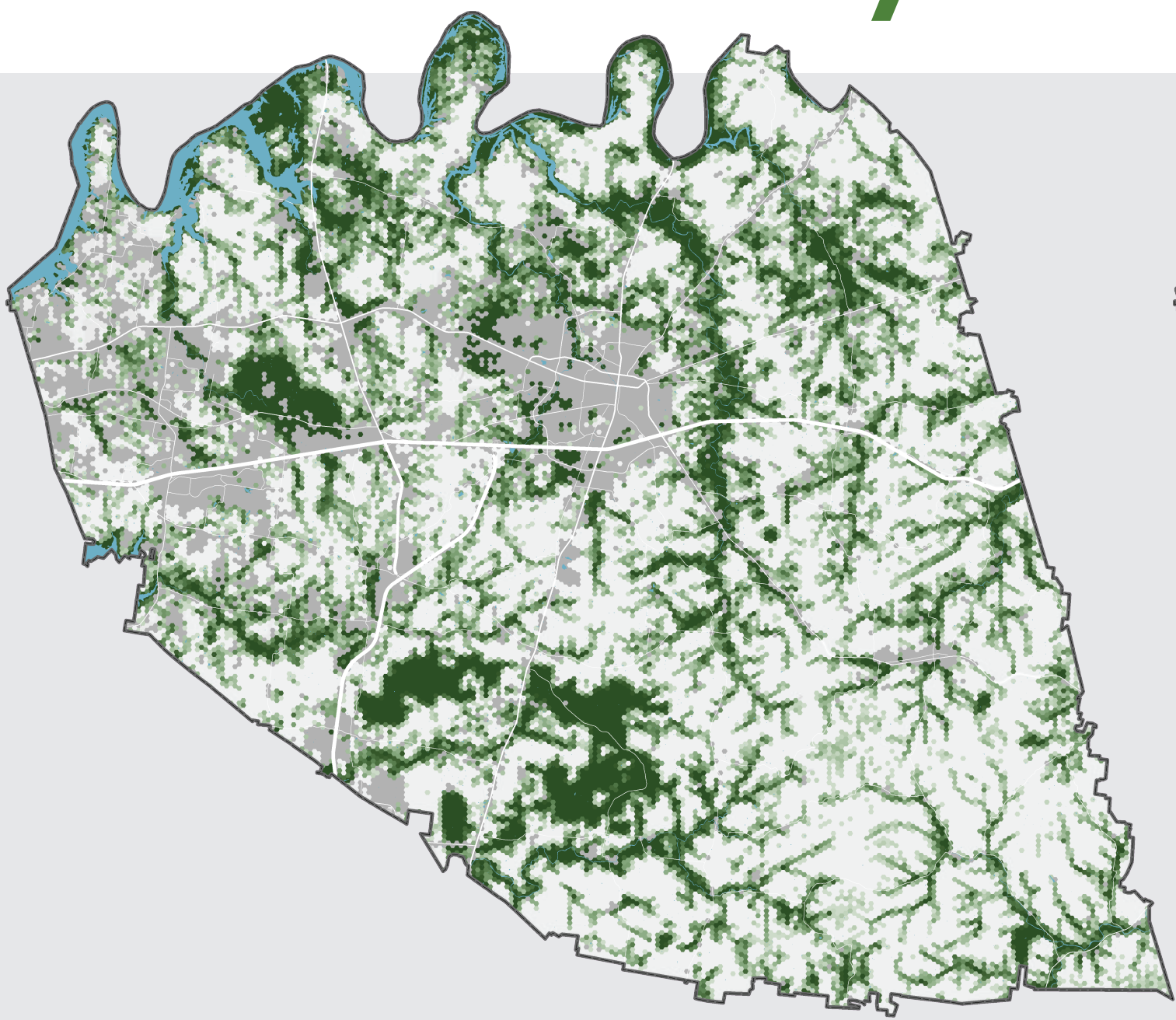
This map depicts environmentally sensitive areas in green or red depending on their level of vulnerability to projected growth. Red areas are most vulnerable to new growth based on regional land development forecasts.

# Implications of Growth

## Impacts on Open Space and Natural Areas

Today

— Last 20 Years —



Environmentally Sensitive Areas  
Degree of Sensitivity  
Developed Areas

Gains in Impervious Surface  
New Impervious Surface  
Undeveloped Areas

Losses in Tree Canopy  
Density of Existing Canopy  
Areas of Lost Canopy

FOREST AND SCRUBLAND

33%

of existing land consumed by 2045

AG AND GRASSLAND

18%

of existing land consumed by 2045

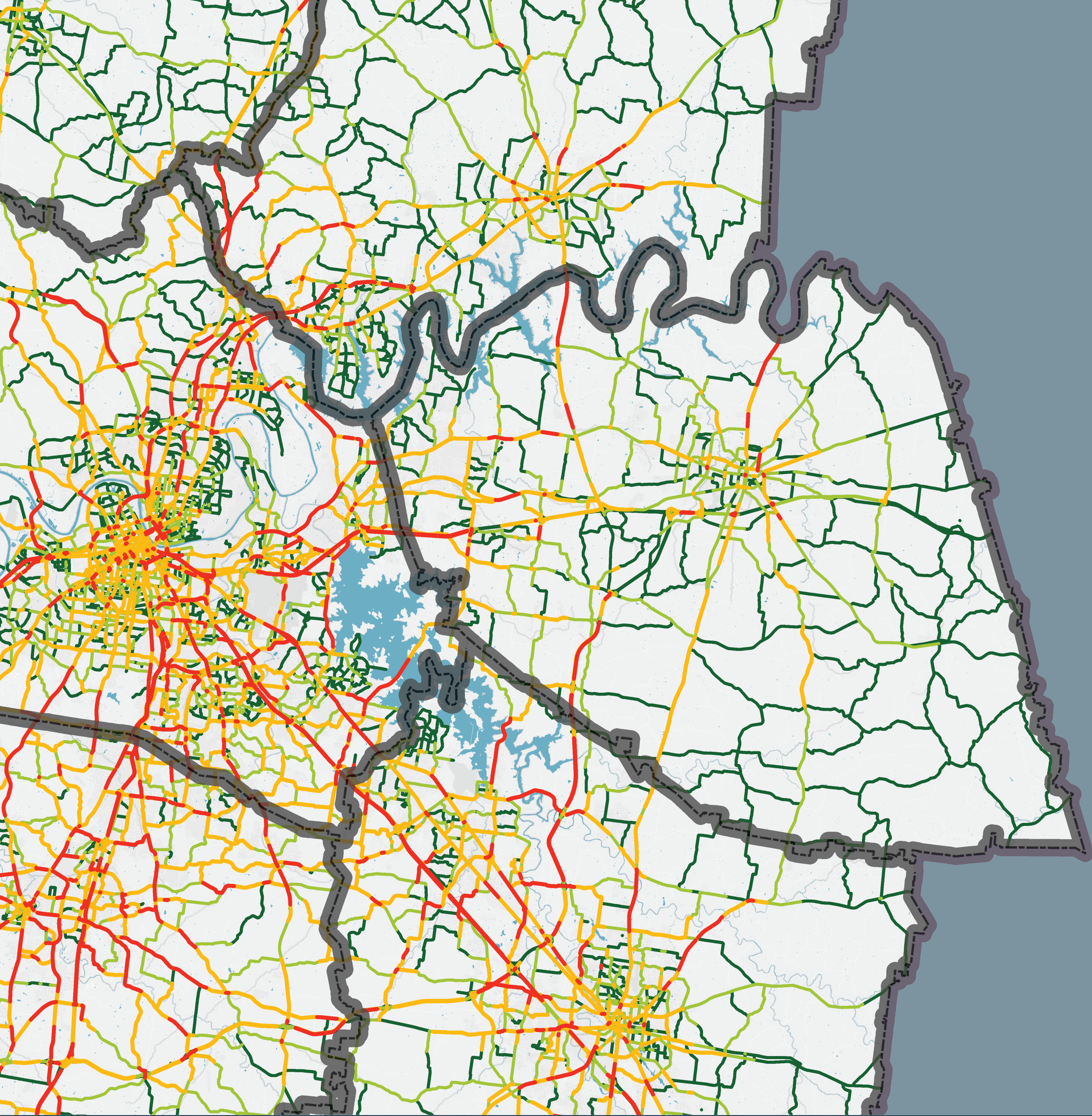
ALL OPEN SPACE

81k

acres of land consumed by 2045

Data sources for poster: National Land Cover Dataset; GNRC Land Use Forecasts and UrbanFootprint Model





## 2045 OUTLOOK

Traffic volumes have risen sharply in recent years leading to widespread congestion. By the year 2045, the amount of time area residents spend on congested roadways is expected to double as average travel speeds decline by 15% regionwide, according to regional forecasts.

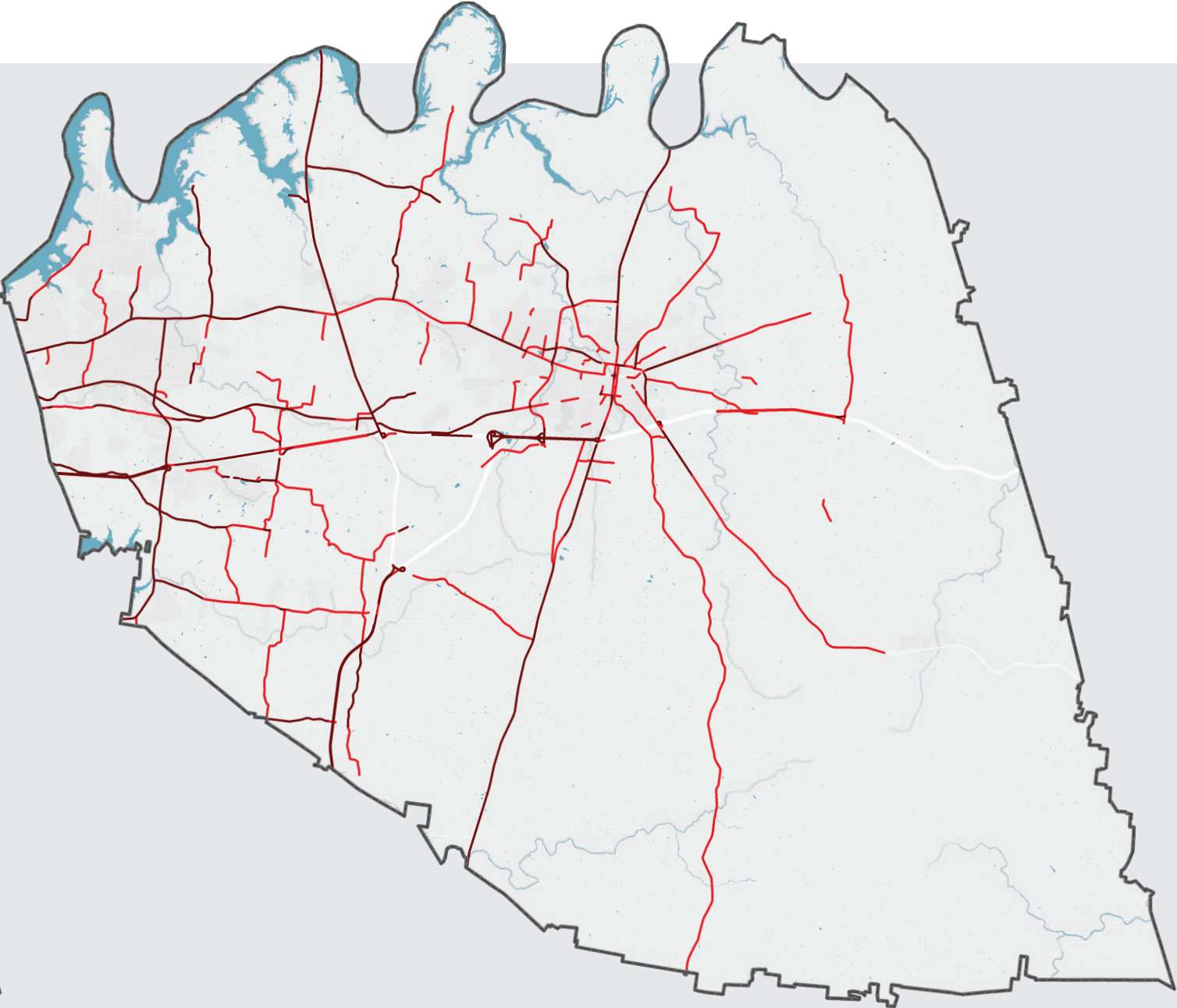
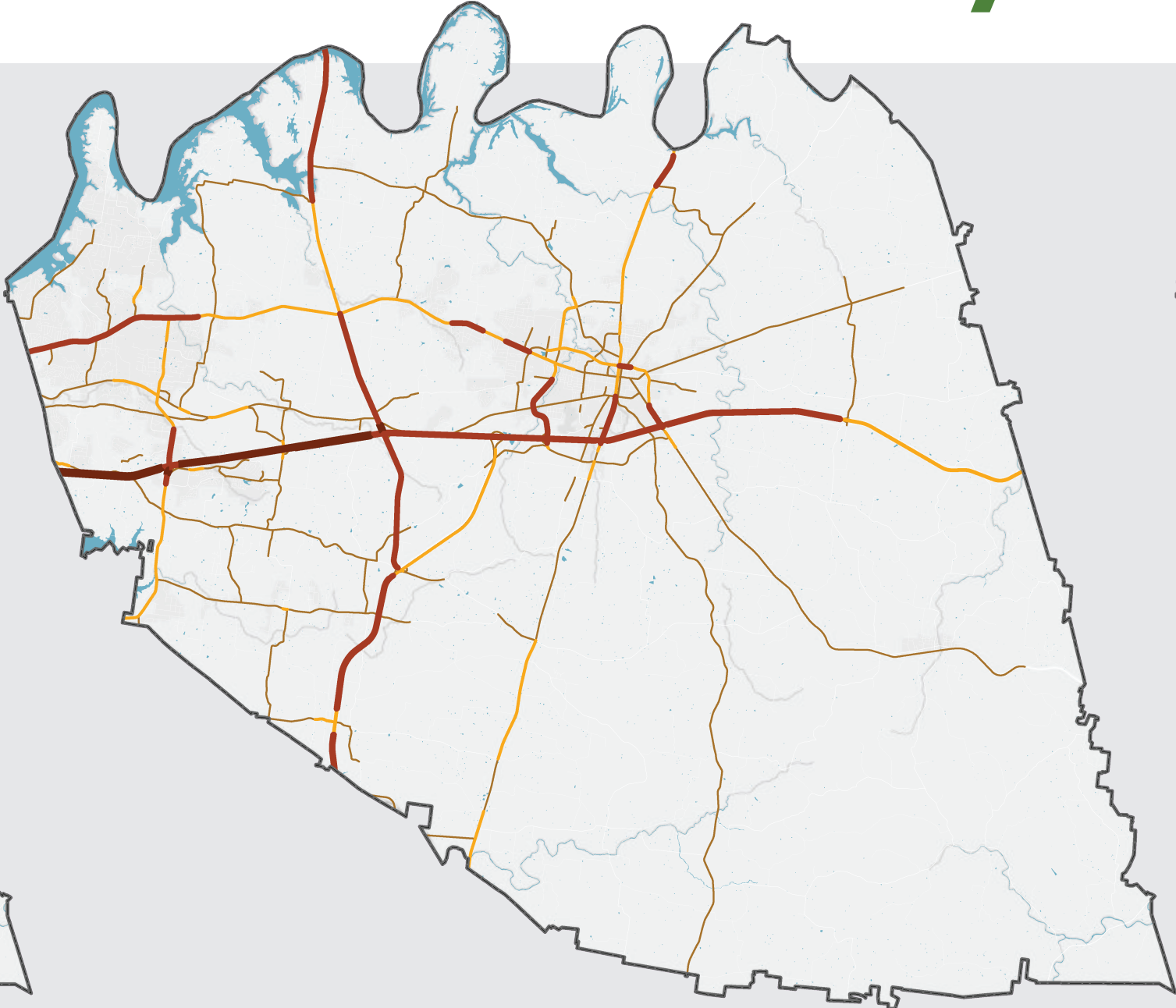
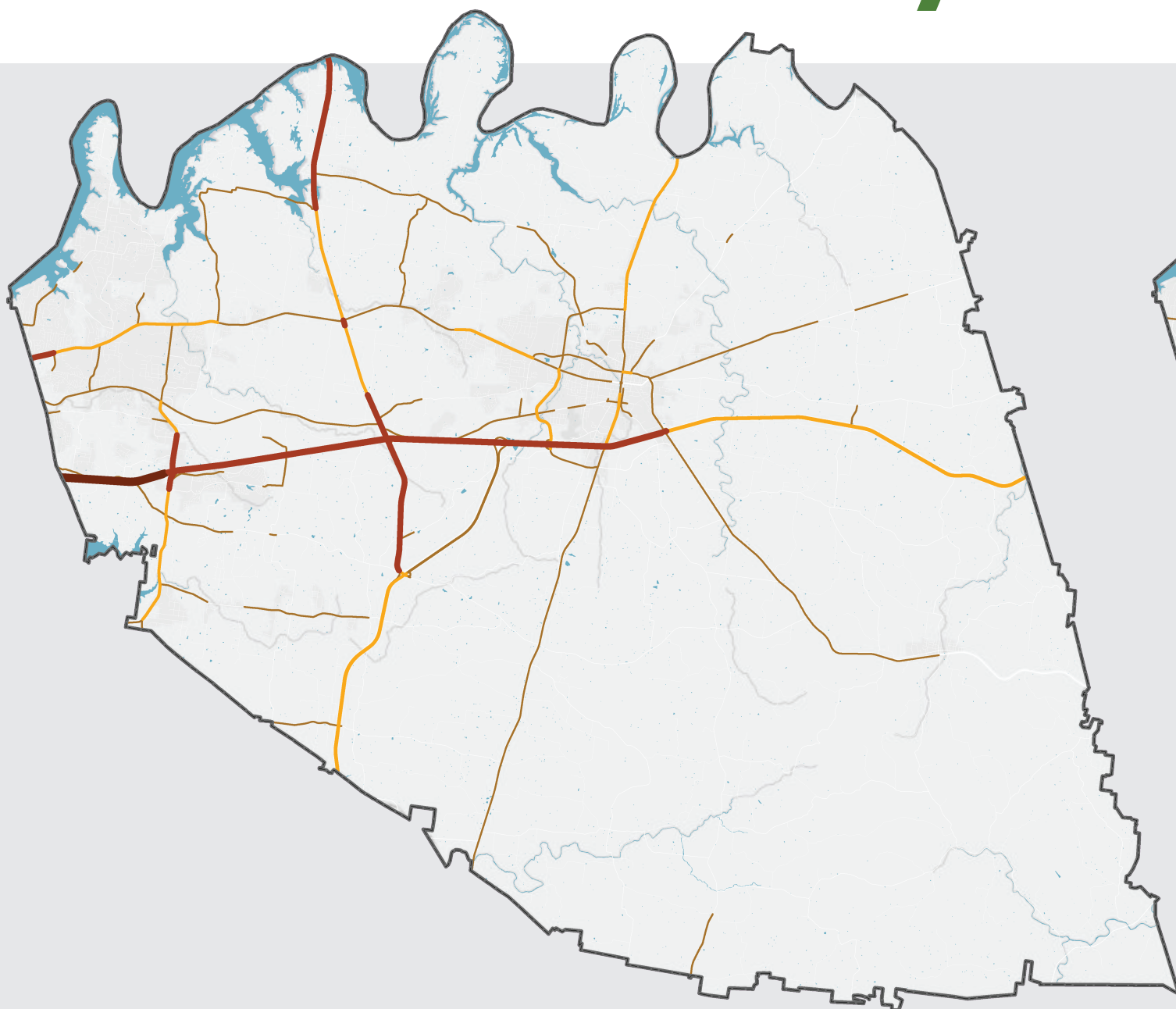
This Map depicts routes that are anticipated to experience speeds slower than free flow by 2045. Dark green routes are forecast to operate at uncongested speeds, but others will experience regular delays with those in orange or red anticipated to see significant congestion.

# Implications of Growth

## Impacts on Transportation and Mobility

Today

— By 2045 —



Average  
Number of  
Daily Vehicles

- 5k to 15k
- 15k to 25k
- 25k to 50k
- 50k or more

Congested in 2020  
Congested in 2045

LEBANON TO NASHVILLE

45-75 MINUTES

Current Morning Commute

MORNING COMMUTE TIMES

71%

increase by 2045

TOTAL TIME TRAVELING EACH DAY

68%

increase by 2045

Data Sources: for poster: TDOT Traffic Counts; FHWA Highway Performance Monitoring System; GNRC Travel Demand Model